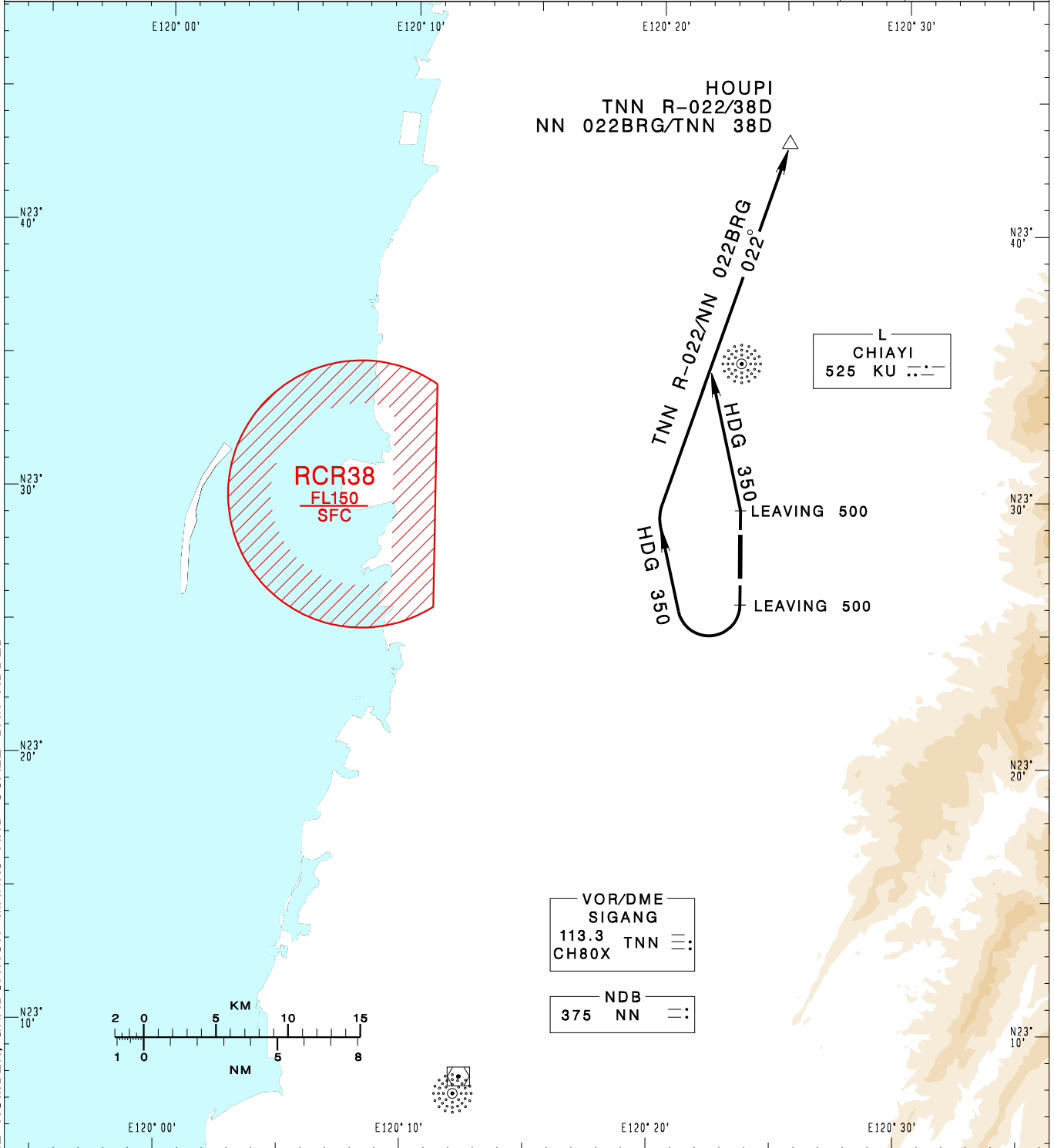


**嘉義機場**  
CHIAYI AD

**RCKU SID**  
**HOUPI 1**

KAOHSIUNG APP 120.6 301.0	CHIAYI TWR 118.6 236.6 275.8	VAR 3° W	
Apt Elev: 85'	Trans Level: FL130		
BEARINGS ARE MAGNETIC; DISTANCES ARE NAUTICAL MILES; ELEVATIONS, HEIGHTS IN FEET			



CHANGES: NEW PAGE NUMBER, GRADUATION MARKS AND SCALE BAR ADDED

**HOUPI ONE DEPARTURE**  
**RWY18:** Depart RWY HDG until leaving 500ft, turn right HDG 350 to track TNN R-022/NN 022BRG to HOUPI to join W4.  
**RWY36:** Depart RWY HDG until leaving 500ft, turn left HDG 350 to track TNN R-022/NN 022BRG to HOUPI to join W4.

**NOTE**  
 1. For RWY36: Requires a minimum climb gradient of 5.3% (325ft/NM) until 800ft.  
 2. No early turn before DER.